

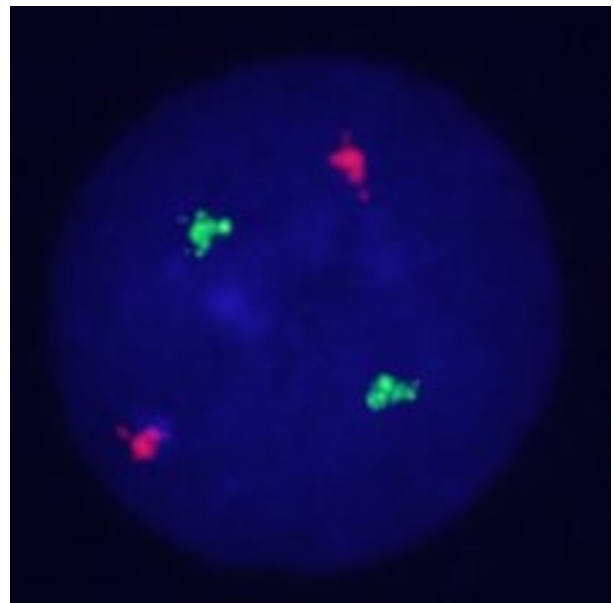
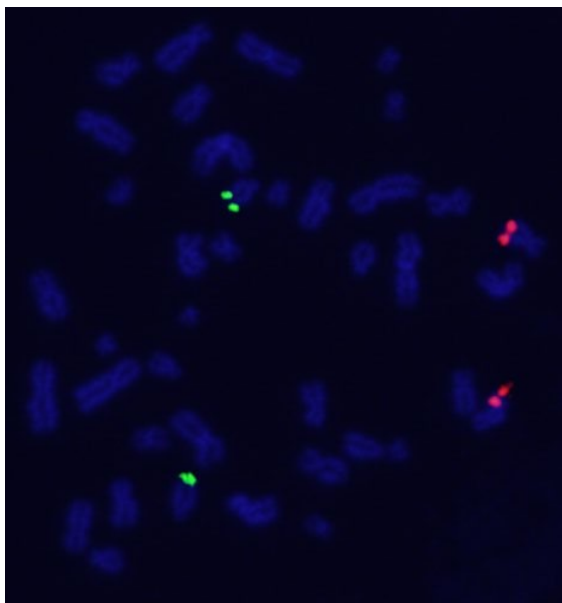
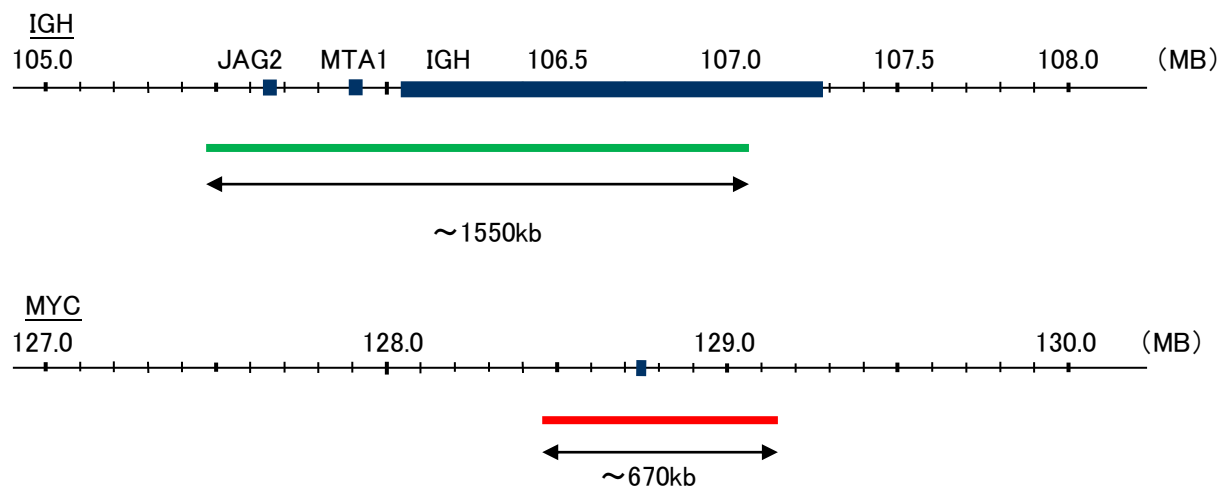
Probe IGH/MYC, DY Translocation Dual Color FISH Probe
Product No. TR030

IGH

Probe Size Approximately 1550kb
Fluorophore FITC
Location 14q32
Also known as IGD1; IGH@; IGHJ; IGHV; IGHD@; IGHJ@; IGHV@; IGH.1@; IGHDY1

MYC

Probe Size Approximately 670kb
Fluorophore TexRed
Location 8q24
Also known as MRTL; MYCC; c-Myc; bHLHe39



Representative images of normal human cell (lymphocyte) stain with the dual color FISH probe. The left image is chromosomes at metaphase, and the right image is an interphase nucleus.