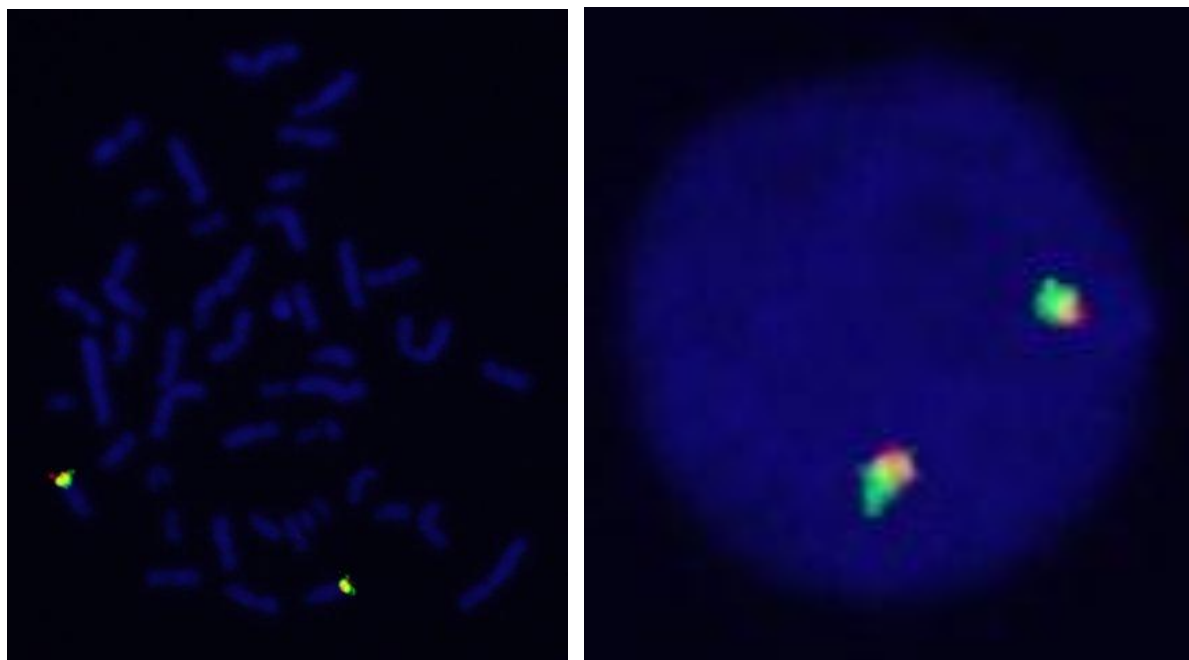
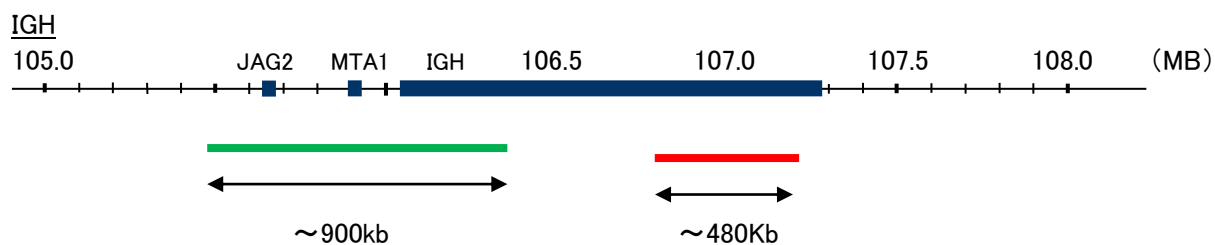


Probe	IGH Split Dual Color FISH Probe
Product No	SP069
IGH	
Fluorophore	TexRed、FITC
Location	14q32
Also known as	IGD1; IGH@; IGHJ; IGHV; IGHD@; IGHJ@; IGHV@; IGH.1@; IGHDY1



Representative images of normal human cell (lymphocyte) stain with the dual color FISH probe. The left image is chromosomes at metaphase, and the right image is an interphase nucleus.