

Probe ADAR/CEN1p Dual Color FISH Probe  
Product No. GC264

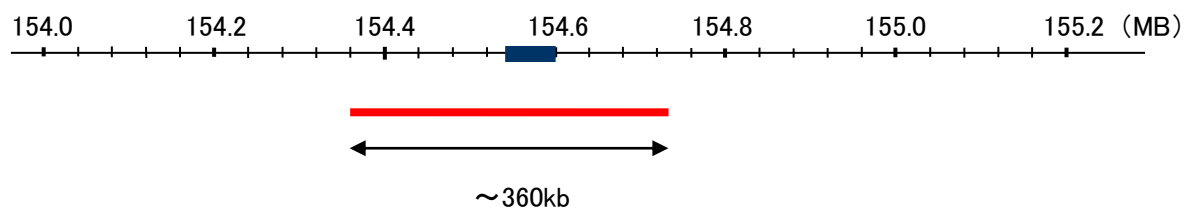
ADAR

Probe Size Approximately 360kb  
Fluorophore TexRed  
Location 1q21.3  
Also known as DSH; AGS6; G1P1; IFI4; P136; ADAR1; DRADA; DSRAD; IFI-4; K88DSRBP

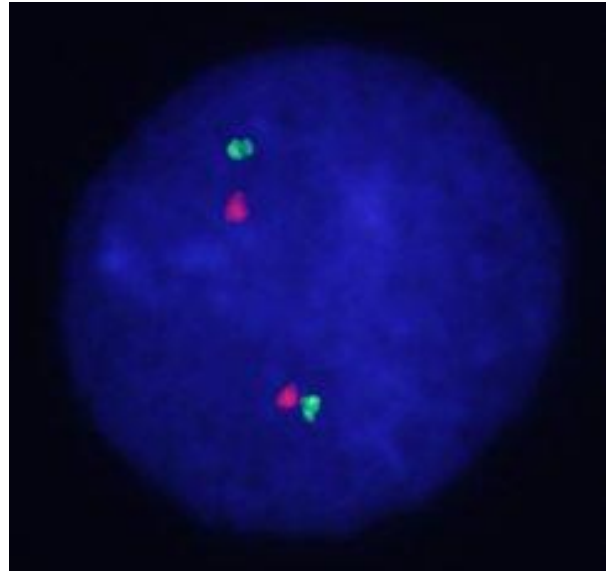
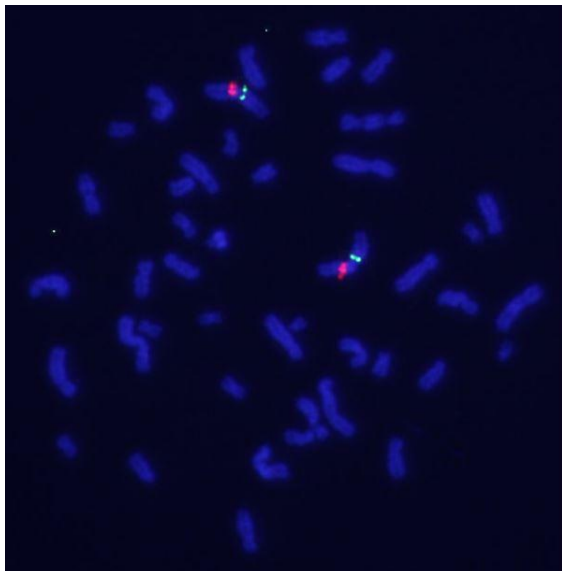
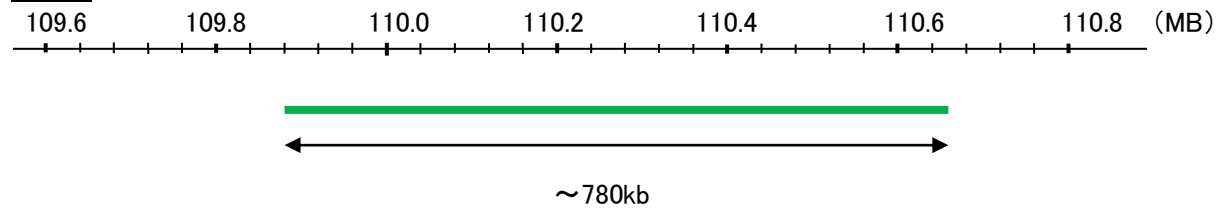
CEN1p

Probe Size Approximately 780kb  
Fluorophore FITC  
Location 1p13.3

ADAR



CEN1p



representative images of normal human cell (lymphocyte) stain with the dual color FISH probe. The left image is chromosomes at metaphase, and the right image is an interphase nucleus