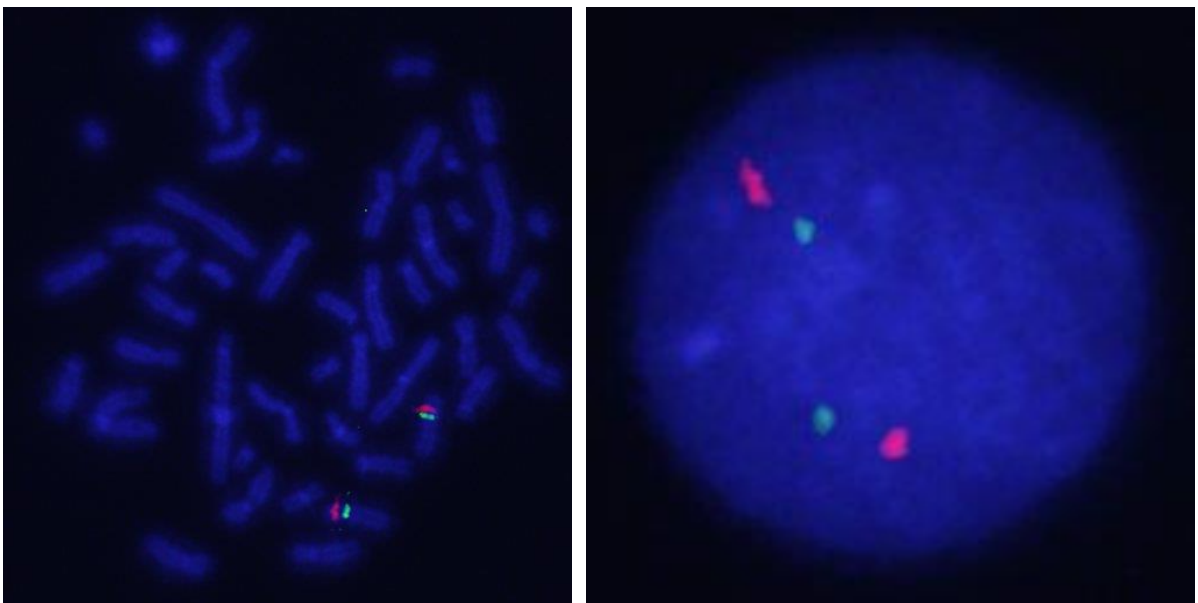
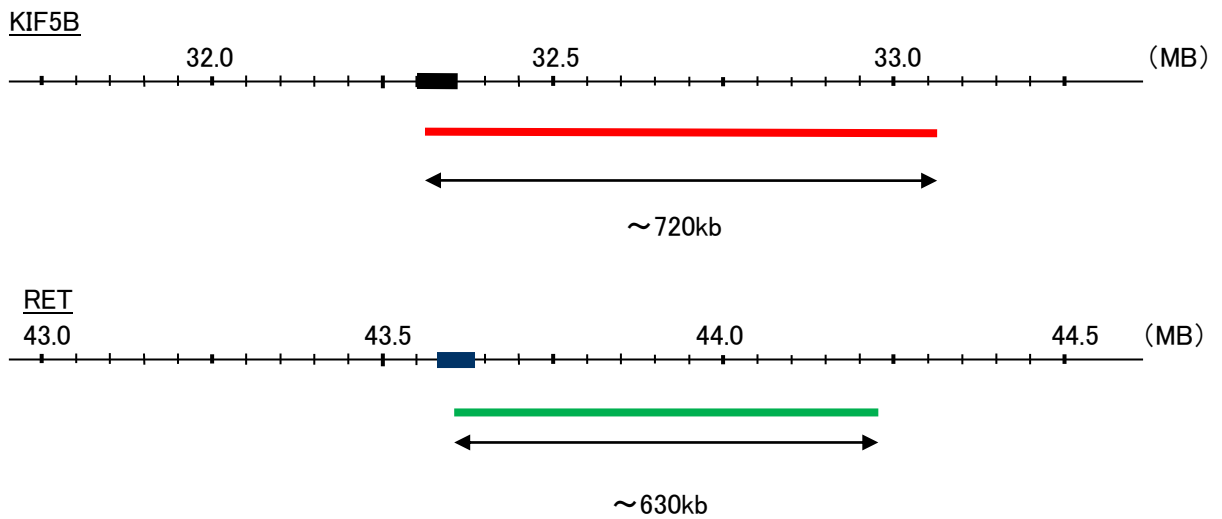


Probe KIF5B/RET, SY Translocation Dual Color FISH Probe(V.2)  
Product No. TR050

**KIF5B**  
Probe Size Approximately 720kb  
Fluorophore TexRed  
Location 10p11.2  
Also known as KNS; KINH; KNS1; UKHC; HEL-S-61

**RET**  
Probe Size Approximately 630kb  
Fluorophore FITC  
Location 10q11.2  
Also known as PTC; MTC1; HSCR1; MEN2A; MEN2B; CDHF12; CDHR16; RET-ELE1



Representative images of normal human cell (lymphocyte) stain with the dual color FISH probe. The left image is chromosomes at metaphase, and the right image is an interphase nucleus.