

Probe CCDC6/RET, SY Translocation Dual Color FISH Probe TR049

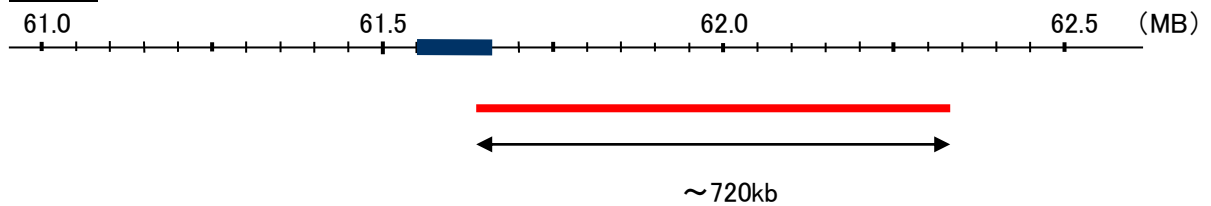
CCDC6

Probe Size Approximately 720kb
Fluorophore TexRed
Location 10q21
Also known as H4; PTC; TPC; TST1; D10S170

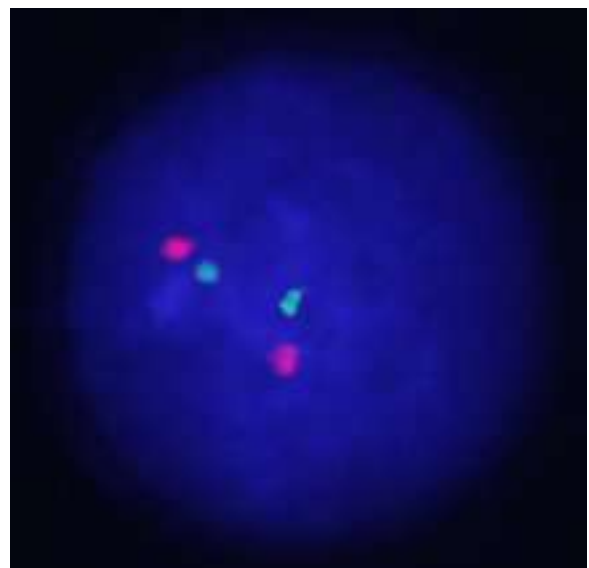
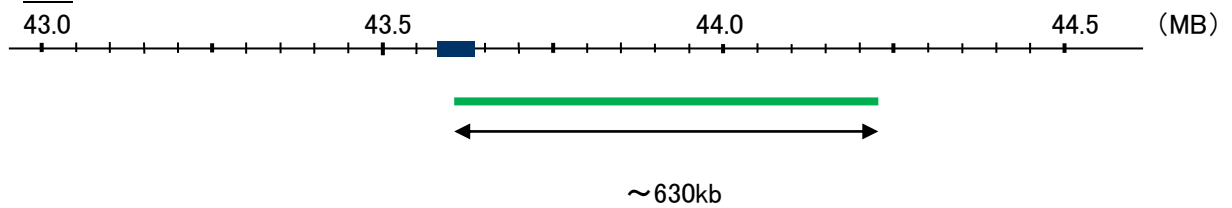
RET

Probe Size Approximately 630kb
Fluorophore FITC
Location 10q11.2
Also known as PTC; MTC1; HSCR1; MEN2A; MEN2B; CDHF12; CDHR16; RET-ELE1

CCDC6



RET



Representative images of normal human cell (lymphocyte) stain with the dual color FISH probe. The left image is chromosomes at metaphase, and the right image is an interphase nucleus.