

Probe FUS Split Dual Color FISH Probe  
Product No. SP020

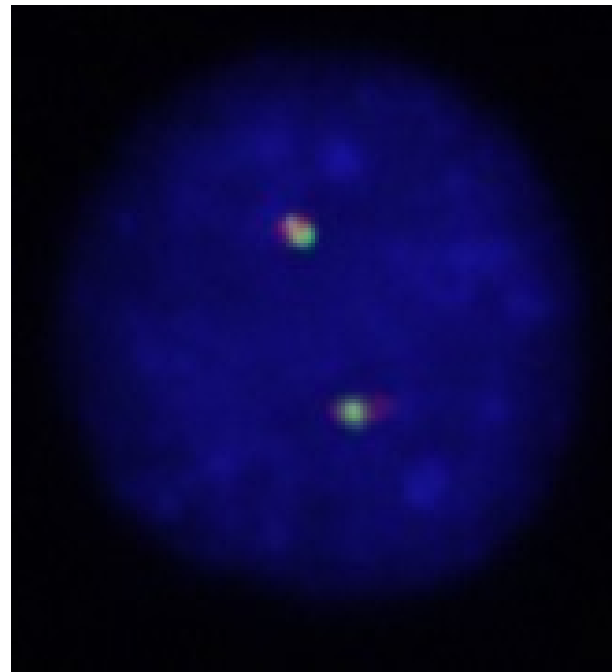
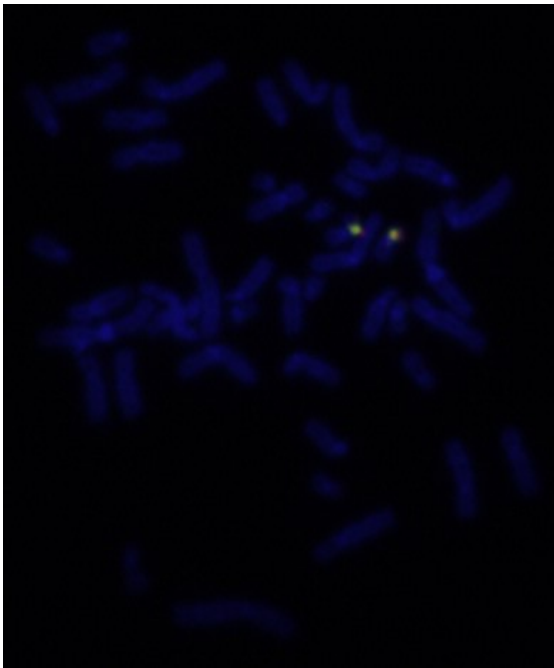
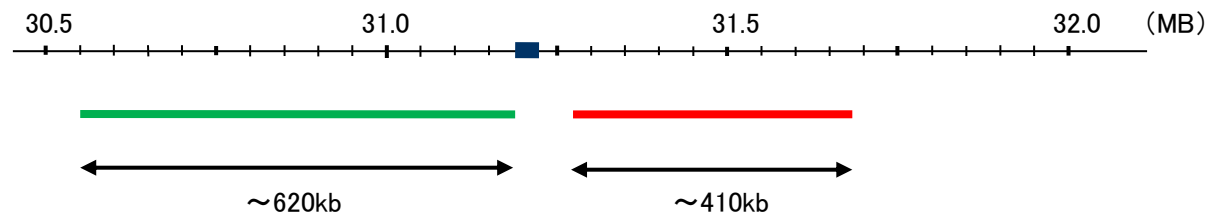
FUS

Fluorophore FITC, TexRed

Location 16p11.2

Also known as TLS; ALS6; ETM4; FUS1; POMP75; HNRNPP2

FUS



Representative images of normal human cell (lymphocyte) stain with the dual color FISH probe. The left image is chromosomes at metaphase, and the right image is an interphase nucleus.