

Probe HER2/TOP1/CEN17 TriColor FISH Probe
Product No. GC248

HER2

Probe Size Approximately 510kb

Fluorophore FITC

Location 17q12

Also known as NEU; NGL; ERBB2; TKR1; CD340; HER-2; VSCN2; MLN 19; MLN-19; c-ERB2; c-ERB-2; HER-2/neu; p185(erbB2)

TOP1

Probe Size Approximately 420kb

Fluorophore TAMRA (Orange)

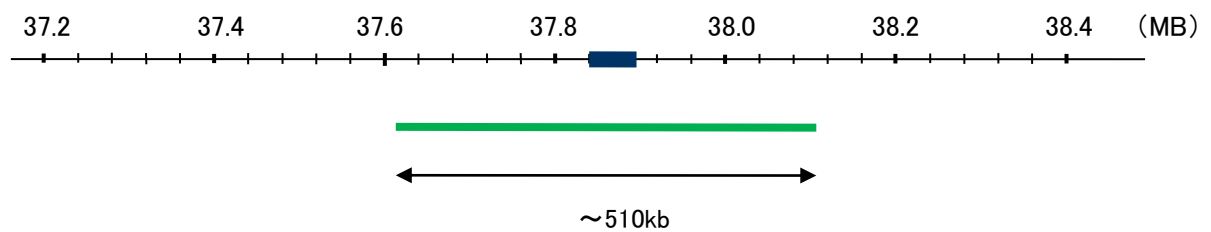
Location 20q12

CEN17 (D17Z1)

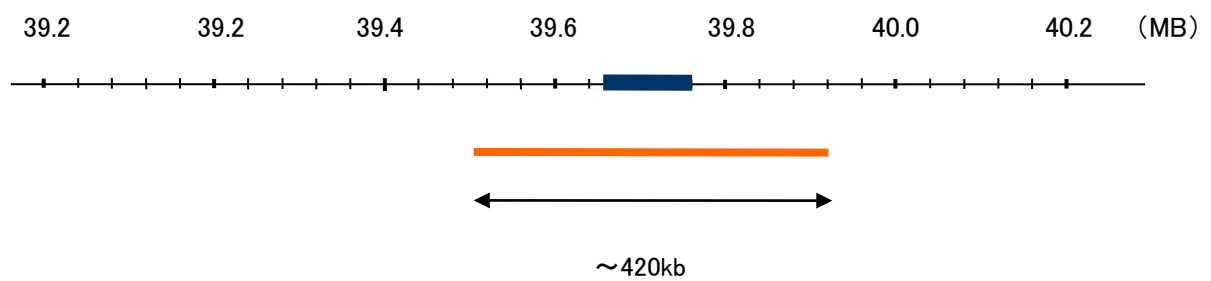
Fluorophore DEAC

Location 17p11.1-17q11.1

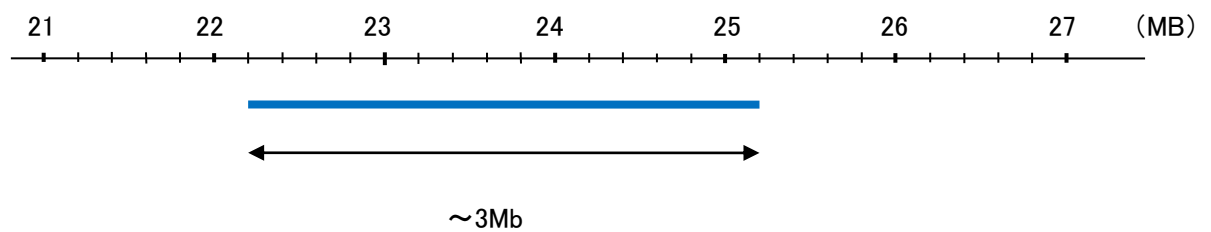
HER2

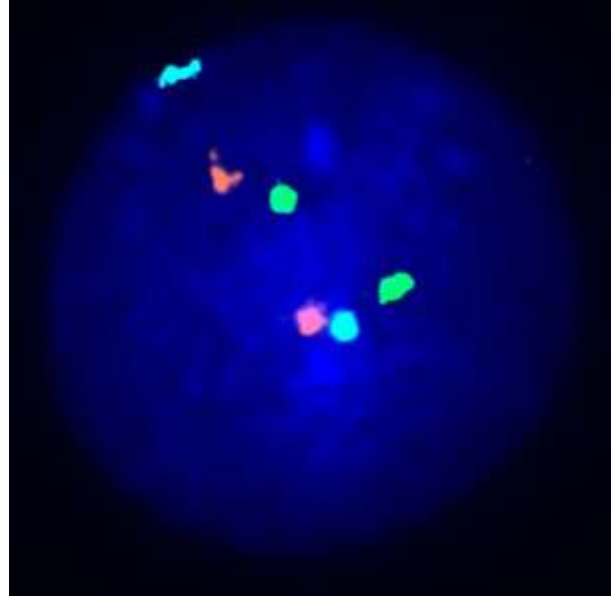
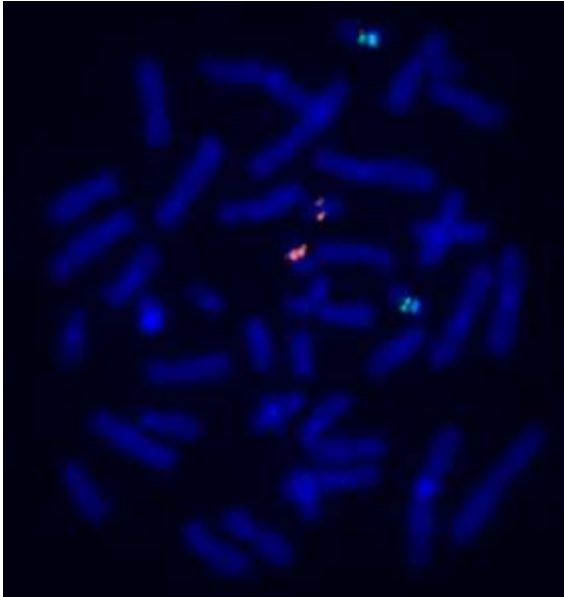


TOP1



CEN17(D17Z1)





representative images of normal human cell (lymphocyte) stain with the dual color FISH probe. The left image is chromosomes at metaphase, and the right image is an interphase nucleus.