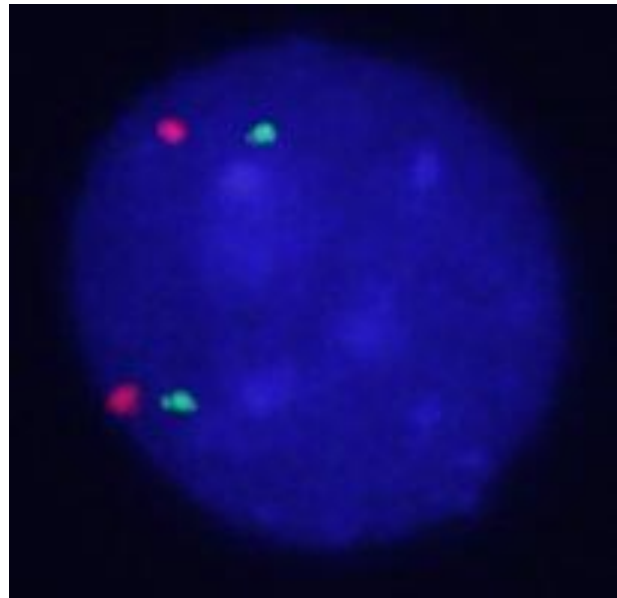
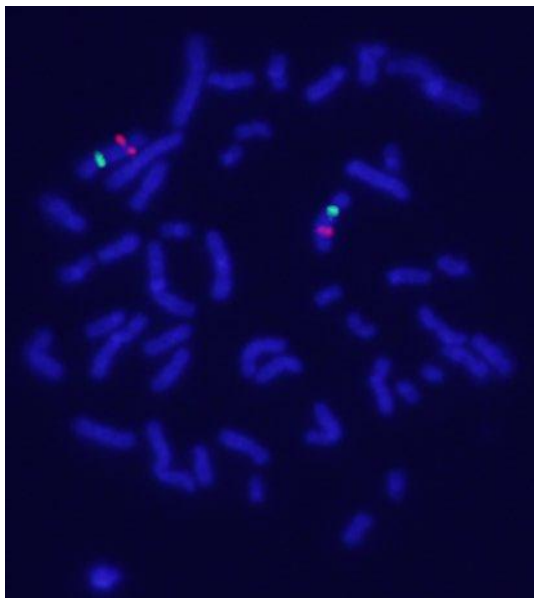
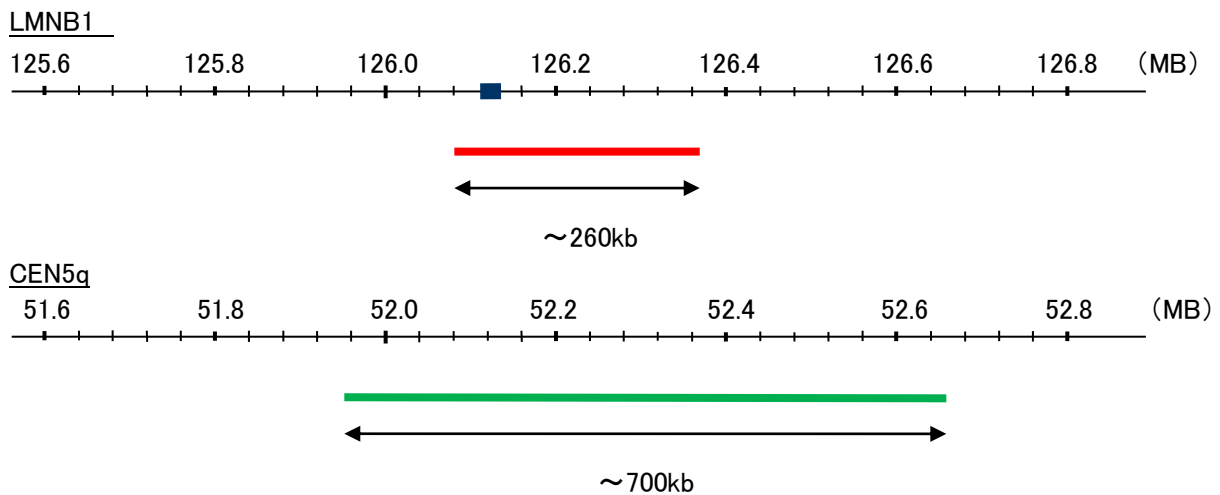


Probe LMNB1/CEN5q Dual Color FISH Probe
Product No GC256

LMNB1
Probe Size Approximately 260kb
Fluorophore TexRed
Location 5q23.2
Also known as LMN; ADLD; LMN2; LMNB; MCPH26

CEN5q
Probe Size Approximately 700kb
Fluorophore FITC
Location 5q11.2



representative images of normal human cell (lymphocyte) stain with the dual color FISH probe. The left image is chromosomes at metaphase, and the right image is an interphase nucleus.