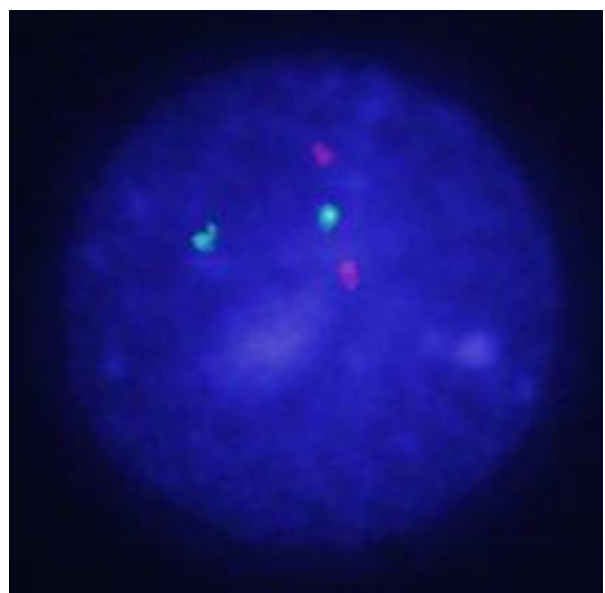
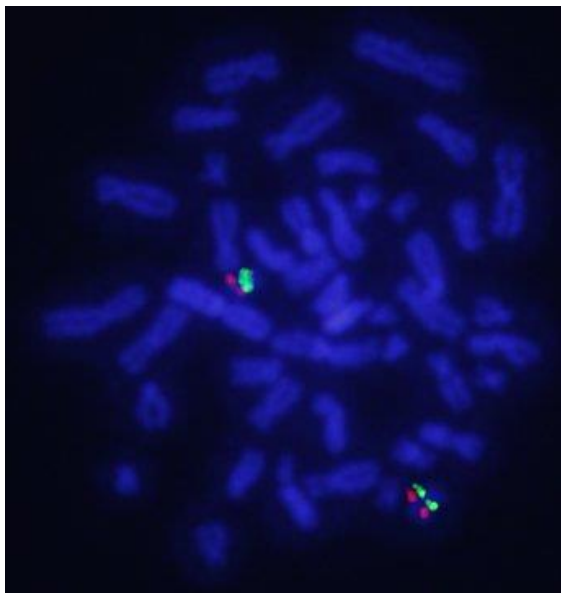
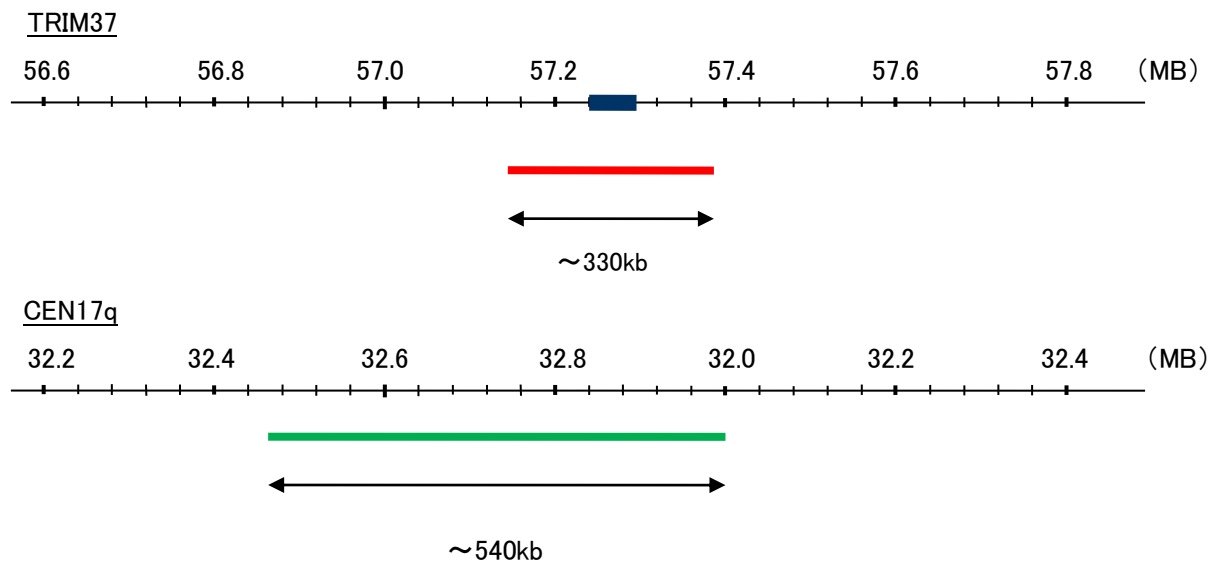


Probe TRIM37/CEN17q Dual Color FISH Probe
Product No GC251

TRIM37
Probe Size Approximately 330kb
Fluorophore TexRed
Location 17q22
Also known as MUL; POB1; TEF3

CEN17q
Probe Size Approximately 540kb
Fluorophore FITC
Location 17q11.2



representative images of normal human cell (lymphocyte) stain with the dual color FISH probe. The left image is chromosomes at metaphase, and the right image is an interphase nucleus.