

Probe XIST/CENXp Dual Color FISH Probe
Product No. GC244

XIST

Probe Size Approximately 150kb
Fluorophore TexRed
Location Xq13.2
Also known as SX11; swd66; DXS1089; DXS399E; LINC00001; NCRNA00001

CENXp

Probe Size Approximately 550kb
Fluorophore FITC
Location Xp11.22

XIST

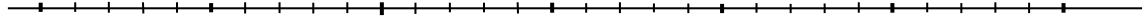
72.4 72.6 72.8 73.0 73.2 73.4 73.6 (MB)



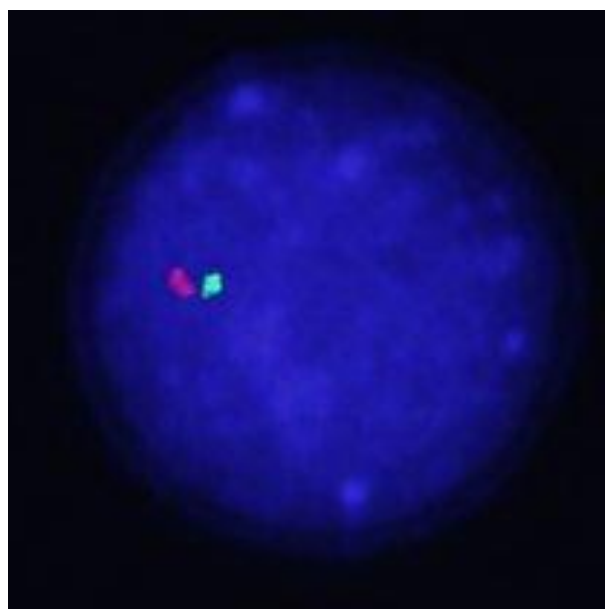
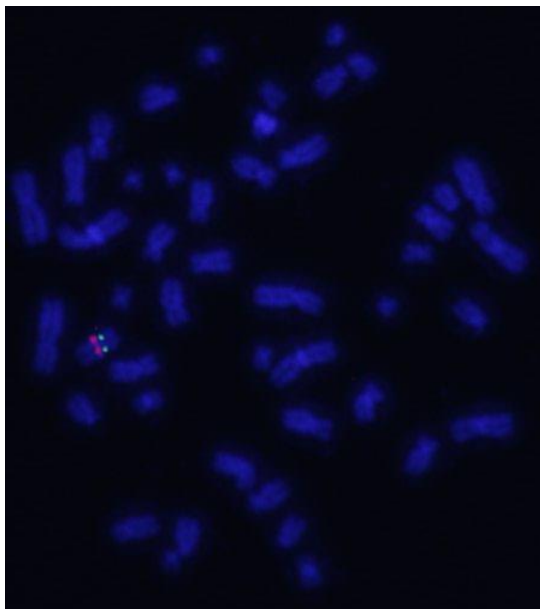
~150kb

CENXp

48.8 49.0 49.2 49.4 49.6 49.8 50.0 (MB)



~550kb



representative images of normal human cell (lymphocyte) stain with the dual color FISH probe. The left image is chromosomes at metaphase, and the right image is an interphase nucleus.